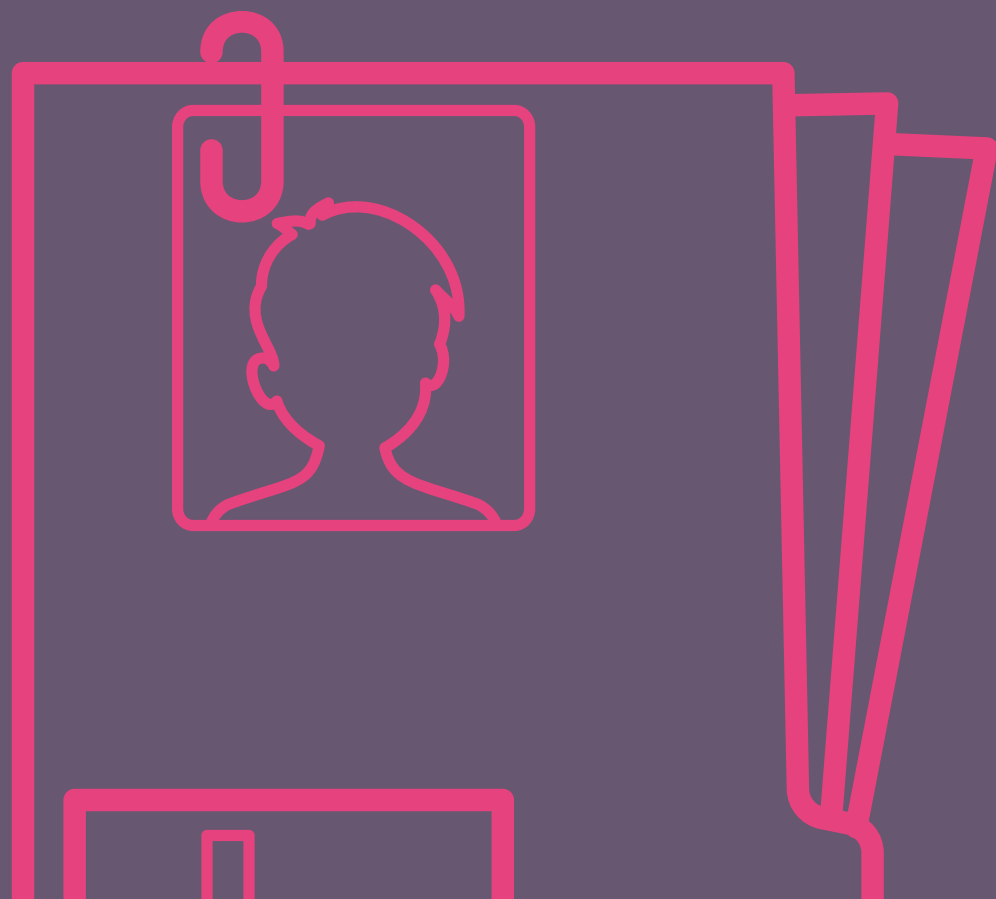


Local Economic Impact of the Proposed Changes to Personal Independence Payments (PIP) by Parliamentary Constituency

May 2025





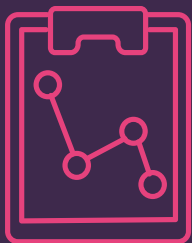
Authors:

Bennett, N., Munford, L., Davies, H., Sutton, M., and Bamba, C. Local Economic Impact of the Proposed Changes to Personal Independence Payments (PIP) by Parliamentary Constituency, Health Equity North, Newcastle.

Cite as:

Bennett, N., Munford, L., Davies, H. and Bamba, C. Economic Impact of the Proposed Changes to Personal Independence Payments (PIP) by Parliamentary Constituency, Health Equity North, Newcastle.

This report was funded and produced by Health Equity North (HEN). HEN is funded by the Northern Health Science Alliance (NHS) and the Universities of Liverpool, Manchester, Newcastle, and York. The views expressed in this publication are those of the author(s) and not necessarily those of the funders.



SUMMARY

Personal Independence Payments (PIP) are a non-means tested benefit provided to help with the additional costs incurred to people living with a long-term disability or chronic health issue.

In March 2025, the Chancellor Rachel Reeves and the Secretary of State for the Department for Work and Pensions (DWP) announced several changes to PIP.

The DWP has estimated that the changes will result in 400,000 less people being eligible for PIP and that 250,000 people will be pushed into poverty, including 50,000 more children.

The PIP changes are subject to a Parliamentary vote. To support Parliamentarians with this, our analysis examines how much money each English constituency will lose from their local economies as a result of the changes.

We found that:

The average loss per working age adult in England will be

£176
per year

The smallest losses per person will be in **Bristol Central (£62)**, **Oxford and West Abingdon (£66)** and **Wimbledon (£67)**

The biggest financial losses per person by Parliamentary Constituency will be in

Easington

£409

Liverpool Walton

£403

Knowsley

£398

The worst hit constituencies will lose over

£20 million
each, per year.

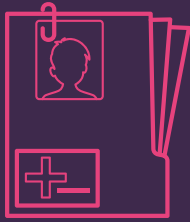
There is a clear regional pattern with 'Red Wall' constituencies in the North East (average loss £269 per working age adult), North West (£231 per working age adult), Yorkshire and The Humber (£206 per working age adult), West Midlands (£191 per working age adult) as well as the East Midlands (£185) hardest hit

As with austerity, the largest financial reductions are in the most deprived constituencies. The most deprived 10% of constituencies will lose

£265

on average per working age adult, nearly three times the least deprived 10% of constituencies (£96, on average).

The financial losses are highest in the constituencies with the lowest life expectancies, which means health inequalities are likely to widen even further



Background: Proposed Changes to Personal Independence Payments (PIP)



Personal Independence Payments (PIP) are a non-means tested benefit provided to help with the additional costs incurred to people living with a long-term disability or chronic health issue.¹ PIP payments are comprised of two separate components: the Daily Living award (standard weekly amount of £73.90, or an enhanced amount of £110.40) and the Mobility Award (standard £29.20, or enhanced £77.05).² According to the latest data, there are currently 3,655,815 claimants in England and Wales.³ To qualify for PIP, applicants are assessed against having difficulty doing everyday tasks and a health condition expected to last 12 months or more.⁴ PIP applicants are subject to an eligibility assessment in which they 'score points' according to the level of support required across ten aspects of day-to-day tasks and behaviours. Currently, to be granted a new PIP award, a claimant must be aged between 16 and pension age.

In the Pathways to Work Green Paper, the UK government proposes several changes to PIP including excluding younger age groups and restricting eligibility for the Daily Living component of PIP by requiring claimants to score at least four points in at least

one question to be eligible.⁵ This restriction will also impact some who are currently eligible for the Carer's Allowance and the carer element of Universal Credit – eligibility for which in part rests of receipt of at least one benefit – one of which is the Daily Living component of PIP.⁶

According to a national impact analysis published by the DWP, it is estimated that this change will result in 400,000 less people being eligible for PIP and approximately 150,000 people losing access to the other benefits that are in part contingent on PIP receipt.⁷ The report further suggests that 250,000 people will be pushed into poverty, including 50,000 more children.

The PIP changes are subject to a Parliamentary vote. To support Parliamentarians with this, this analysis examines how much money each parliamentary constituency will lose from their local economies because of the changes. We rank each constituency from biggest loss to smallest loss and then examine geographical patterns and associations with measures of health and deprivation.

Methodology

We merged data from several sources using 2024 Westminster Parliamentary Constituency Boundaries. We retrieved data on constituency populations and the Index of Multiple Deprivation (IMD) from the Commons Library.^{8,9,10} Additionally, we retrieved data on life expectancy at birth at 2024 constituency level from the Office for National Statistics.¹¹ We also used data from the Department for Work and Pensions via the Stat-Xplore tool on the total number of PIP cases in England, and on case counts for different elements of PIP.¹² All PIP count data correspond to the month of January 2025.

To calculate the estimated reduction in PIP awards by constituency, we use figures provided in a recent Freedom of Information request detailing the proportion of Daily Living award claimants (working age claimants living in regions under DWP policy ownership) scoring less than four points in all ten activities assessed (87% of standard award claimants and 13% of enhanced award claimants).¹³ We use these statistics to estimate the loss in total award amount by English Westminster Parliamentary Constituency via the following steps.

STEP ONE

We calculated the weekly income of the standard and enhanced award amounts according to the number of cases of each per constituency.

STEP TWO

We then calculated a fixed proportion of each component as the total annual loss (87% and 13% of these figures respectively).

STEP THREE

We combined the two loss estimates into an estimate of total loss in Daily Living PIP per constituency and multiplied this into an annual estimate.

STEP FOUR

This figure was then divided by the total working age population in each constituency to give an estimate of total yearly loss per working age adult.

Results



Our analysis suggests there will be an estimated annual average loss in PIP revenue of £176.06 per working age adult across English Parliamentary Constituencies. This estimate varies widely across constituencies. For example, there is an estimated loss of £409.16 per working age adult in the Easington constituency (a total loss of over £23 million per year to the constituency's economy), closely followed by Liverpool Walton (£403.26 per working age adult or over £26 million total) and Knowsley (£388.86 per adult and over £23 million total). Conversely, Bristol Central is set to lose 'just' £62.30 per working age adult, Oxford and West Abingdon £65.70 and Wimbledon £67.41 per working age person.

Table 1 presents a list of the top and bottom ten constituencies set to lose the most/least (a full table of estimated losses by constituency is presented in Appendix Table A). It is notable that, of the ten constituencies set to lose the most, all are held by the governing party - Labour - and all are located in the North East or North of West of England, whereas the constituencies set to lose the least are all located in the South or East of England. The worst hit areas will lose over £20 million each per year (Table 1).

We visualise the geographic distribution of estimated loss to PIP revenue by constituency in Figure 1. In this figure, the geographical burden of the new PIP eligibility restrictions is made clear. There is a clear regional pattern with 'Red Wall' constituencies in the

North East (average loss £269), North West (£231), Yorkshire and The Humber (£206), West Midlands (£191) as well as the East Midlands (£185) being hardest hit. Full regional estimates are provided in Appendix Table B.

Areas which were most impacted by financial losses from welfare reform under the Coalition and Conservative governments (2010 – 2024) were the most deprived.¹⁵ We assessed whether this was the also the case in forecasted PIP reductions and visualise the relationship between this loss and area deprivation (using the Index of Multiple Deprivation - IMD). This demonstrates a strikingly clear relationship between total estimated loss in PIP and area deprivation – meaning the constituencies ranked as most deprived are set to lose the most (Coefficient -0.33 SE 0.01, $p < 0.00$; see Appendix Figure A). The most deprived decile of constituencies are set to lose an average of £265, compared to £96 in the least deprived. This is shown in Figure 2.

Given that PIP is a health-related benefit, we also assessed the association between life expectancy at birth as an indicator of population health and total estimated loss in PIP. Again, there is a strong association between the two, such that the areas set to lose the most tend to have much lower life expectancies (Coefficient -27.11, SE 0.92, $p < 0.001$; see Appendix Figure B).

Table 1 – Constituencies ranked by estimated annual financial loss per working age adult

Rank	Financial loss (£ per working age person) per year	Est. total loss (£) to the constituency per year	Constituency	Region	Party
Most impacted					
1	409.16	23,766,320	Easington	North East	Lab
2	403.26	26,234,164	Liverpool Walton	North West	Lab
3	388.86	23,437,074	Knowsley	North West	Lab
4	361.58	23,390,504	Bootle	North West	Lab
5	358.81	24,746,040	Blackpool South	North West	Lab
6	358.19	23,678,482	Birkenhead	North West	Lab
7	354.23	20,312,438	Hartlepool	North East	Lab
8	350.29	21,632,812	Houghton & Sunderland South	North East	Lab
9	339.28	21,273,778	Liverpool West Derby	North West	Lab
10	339.14	19,881,196	Wallasey	North West	Lab
Least impacted					
534	75.72	5,347,854	Richmond Park	London	LD
535	75.10	4,936,479	Maidenhead	South East	LD
536	74.43	4,150,420	Harpenden & Berkhamsted	East of England	LD
537	73.99	4,586,866	North East Hampshire	South East	LD
538	71.73	4,244,443	Mid Buckinghamshire	South East	Con
539	70.92	4,887,349	Guildford	South East	LD
540	69.37	4,207,824	Wokingham	South East	LD
541	67.41	4,857,497	Wimbledon	London	LD
542	65.70	4,731,523	Oxford West and Abingdon	South East	LD
543	62.30	5,030,599	Bristol Central	South West	Green

Figure 1 - Estimated annual loss, in pounds, per working age person in PIP revenue due to changes in the Daily Living element eligibility

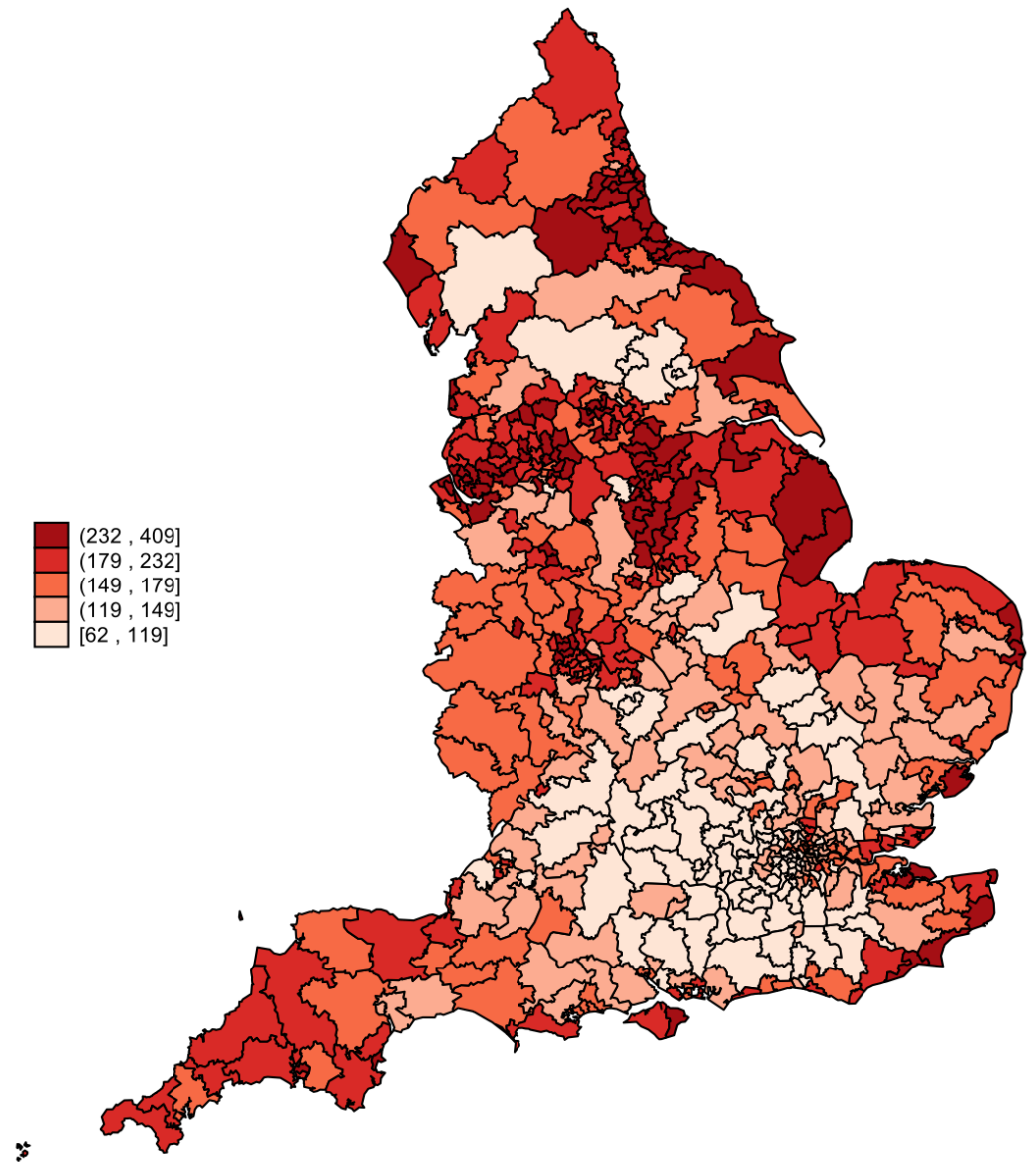
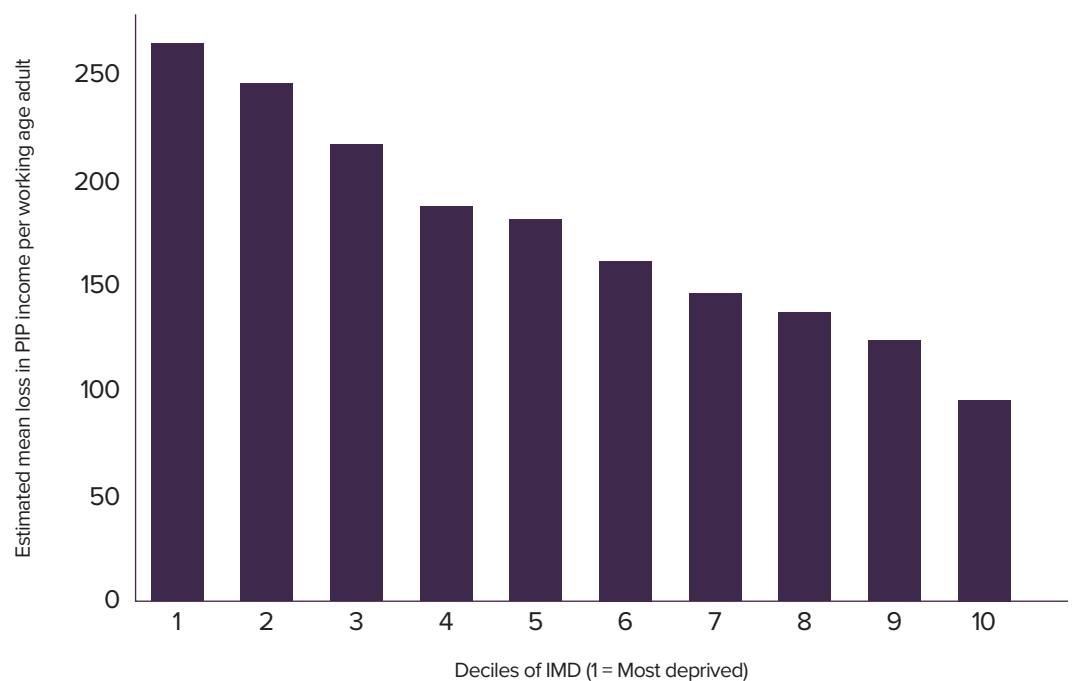
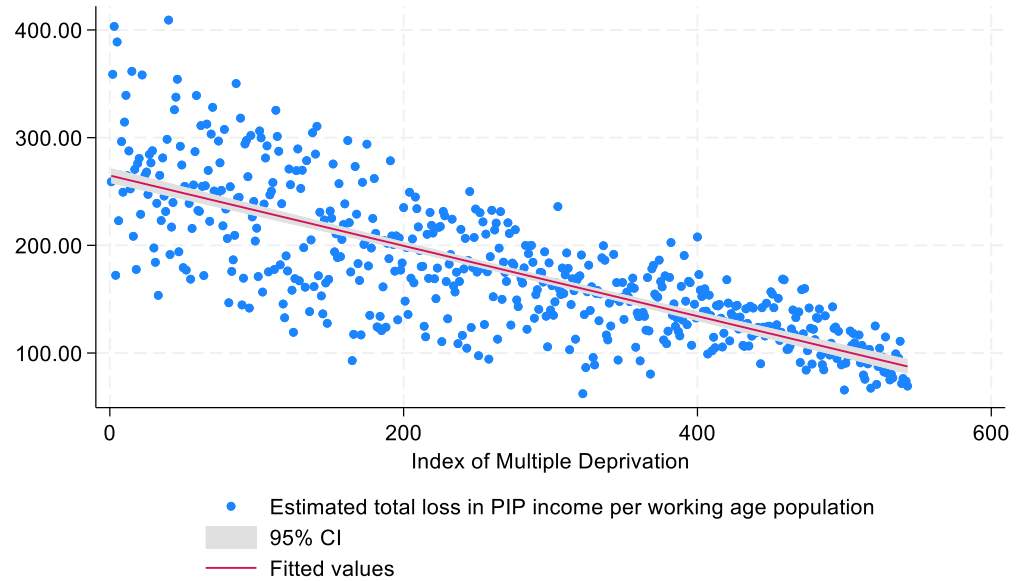


Figure 2: Estimated annual average loss, in pounds, per working age person by deciles of the Index of Multiple Deprivation (IMD)

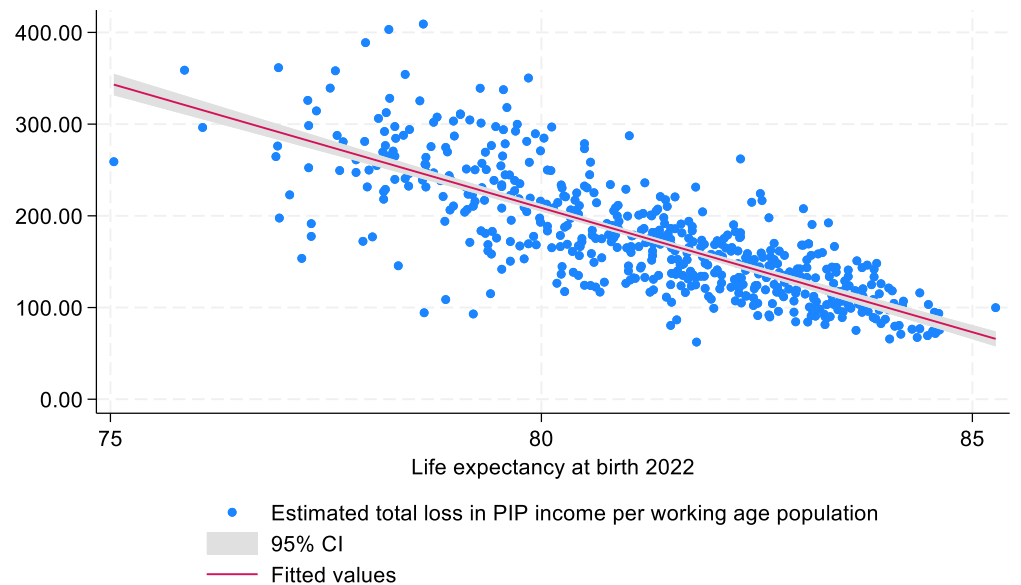


Appendix

Appendix Figure A – Relationship between the estimated annual loss per working age person in PIP revenue due to changes in the Daily Living element eligibility and Index of Multiple Deprivation (higher IMD rank = less deprived)



Appendix Figure B – Relationship between the estimated annual loss per working age person in PIP revenue due to changes in the Daily Living element eligibility and life expectancy at birth



Appendix Table A: Constituencies ranked by estimated annual financial loss per working age adult (biggest loss to smallest loss)

Rank	Estimated loss (£ per working age person)	Est. total loss (£)	Constituency name 2024	Region	Party
1	409.16	23,766,320	Easington	North East	Lab
2	403.26	26,234,164	Liverpool Walton	North West	Lab
3	388.86	23,437,074	Knowsley	North West	Lab
4	361.58	23,390,504	Bootle	North West	Lab
5	358.81	24,746,040	Blackpool South	North West	Lab
6	358.19	23,678,482	Birkenhead	North West	Lab
7	354.23	20,312,438	Hartlepool	North East	Lab
8	350.29	21,632,812	Houghton and Sunderland South	North East	Lab
9	339.28	21,273,778	Liverpool West Derby	North West	Lab
10	339.14	19,881,196	Wallasey	North West	Lab
11	337.60	17,900,708	Clacton	East of England	RUK
12	328.18	19,072,334	Jarrow and Gateshead East	North East	Lab
13	325.92	21,537,414	Barnsley South	Yorkshire and The Humber	Lab
14	325.42	18,649,688	Washington and Gateshead South	North East	Lab
15	318.10	17,077,006	South Shields	North East	Lab
16	314.45	22,193,174	Sheffield Brightside and Hillsborough	Yorkshire and The Humber	Lab
17	312.56	19,386,064	Blyth and Ashington	North East	Lab
18	311.17	18,545,624	St Helens South and Whiston	North West	Lab
19	310.55	18,151,946	Newton Aycliffe and Spennymoor	North East	Lab
20	307.67	17,103,294	Redcar	North East	Lab
21	306.26	20,123,502	Barnsley North	Yorkshire and The Humber	Lab
22	304.56	16,802,674	Blackpool North and Fleetwood	North West	Lab
23	303.32	17,726,850	Great Yarmouth	East of England	RUK
24	302.05	18,665,690	St Helens North	North West	Lab
25	301.16	16,483,202	Bishop Auckland	North East	Lab
26	299.84	17,302,022	Widnes and Halewood	North West	Lab
27	298.45	20,639,172	Rotherham	Yorkshire and The Humber	Lab
28	297.40	18,704,326	Sunderland Central	North East	Lab
29	297.31	17,236,020	North Durham	North East	Lab
30	296.86	17,108,262	Liverpool Garston	North West	Lab
31	296.37	21,819,260	Middlesbrough and Thornaby East	North East	Lab
32	294.14	17,037,760	Rawmarsh and Conisbrough	Yorkshire and The Humber	Lab
33	293.96	18,559,830	Bolsover	East Midlands	Lab
34	292.37	18,790,128	Normanton and Hemsworth	Yorkshire and The Humber	Lab
35	291.99	18,361,666	Stockton North	North East	Lab
36	289.52	16,457,666	Runcorn and Helsby	North West	Lab
37	287.87	18,946,230	Great Grimsby and Cleethorpes	Yorkshire and The Humber	Lab
38	287.69	20,008,834	Blackley and Middleton South	North West	Lab
39	287.37	17,457,944	Plymouth Moor View	South West	Lab
40	287.03	17,853,428	East Thanet	South East	Lab
41	284.75	15,269,460	Lowestoft	East of England	Lab
42	284.53	20,403,644	Tipton and Wednesbury	West Midlands	Lab
43	281.22	19,007,442	Nottingham North and Kimberley	East Midlands	Lab
44	281.15	19,254,290	Boston and Skegness	East Midlands	RUK
45	280.76	17,886,050	Kingston upon Hull East	Yorkshire and The Humber	Lab
46	278.70	15,274,492	Middlesbrough South and East Cleveland	North East	Lab
47	278.55	15,960,089	Chesterfield	East Midlands	Lab
48	276.65	16,471,901	Doncaster North	Yorkshire and The Humber	Lab
49	276.64	19,011,238	Bradford South	Yorkshire and The Humber	Lab
50	276.11	21,556,188	Bolton South and Walkden	North West	Lab
51	275.53	15,564,830	Whitehaven and Workington	North West	Lab
52	274.62	19,392,418	Wythenshawe and Sale East	North West	Lab
53	273.25	14,629,526	Louth and Horncastle	East Midlands	Con
54	270.89	17,758,332	Sheffield South East	Yorkshire and The Humber	Lab
55	270.57	19,948,232	Walsall and Bloxwich	West Midlands	Lab
56	269.74	15,838,209	Ashfield	East Midlands	RUK
57	269.56	15,795,336	Hyndburn	North West	Lab
58	269.37	17,573,758	Mansfield	East Midlands	Lab
59	268.09	20,376,484	Wolverhampton South East	West Midlands	Lab
60	265.26	17,610,084	Birmingham Northfield	West Midlands	Lab
61	265.20	20,179,480	Birmingham Hodge Hill and Solihull North	West Midlands	Lab

62	265.03	17,926,084	Burnley	North West	Lab
63	264.63	20,851,188	Birmingham Erdington	West Midlands	Lab
64	263.80	16,937,776	Pontefract, Castleford and Knottingley	Yorkshire and The Humber	Lab
65	262.07	9,903,540	Isle of Wight East	South East	Con
66	261.08	18,496,238	Blackburn	North West	Ind
67	259.03	24,490,502	Liverpool Riverside	North West	Lab
68	258.52	15,494,328	Ellesmere Port and Bromborough	North West	Lab
69	258.37	15,625,392	Torbay	South West	LD
70	257.29	13,758,242	Folkestone and Hythe	South East	Lab
71	256.34	17,804,552	Leigh and Atherton	North West	Lab
72	256.10	16,271,483	Ashton-under-Lyne	North West	Lab
73	255.36	15,789,461	Heywood and Middleton North	North West	Lab
74	254.82	20,158,422	Newcastle upon Tyne East and Wallsend	North East	Lab
75	254.81	17,364,318	Sheffield Heeley	Yorkshire and The Humber	Lab
76	254.50	15,646,554	Stoke-on-Trent North	West Midlands	Lab
77	252.83	16,781,046	Wigan	North West	Lab
78	252.45	19,959,518	Bradford West	Yorkshire and The Humber	Lab
79	251.06	16,905,336	Halifax	Yorkshire and The Humber	Lab
80	250.44	15,783,996	Hastings and Rye	South East	Lab
81	250.25	16,831,828	Telford	West Midlands	Lab
82	250.00	13,996,126	Blaydon and Consett	North East	Lab
83	249.91	19,137,640	Derby South	East Midlands	Lab
84	249.39	19,052,976	Bradford East	Yorkshire and The Humber	Lab
85	249.32	16,061,116	Bassetlaw	East Midlands	Lab
86	247.92	17,374,764	Bolton North East	North West	Lab
87	247.33	18,136,414	Gorton and Denton	North West	Lab
88	246.92	15,480,191	Gateshead Central and Whickham	North East	Lab
89	245.79	18,175,580	Stoke-on-Trent Central	West Midlands	Lab
90	244.86	14,861,672	Dover and Deal	South East	Lab
91	244.75	15,908,648	Wolverhampton North East	West Midlands	Lab
92	244.64	15,286,831	Dudley	West Midlands	Lab
93	243.82	17,848,532	Huddersfield	Yorkshire and The Humber	Lab
94	240.77	17,254,808	Doncaster Central	Yorkshire and The Humber	Lab
95	239.79	16,804,294	Oldham West, Chadderton and Royton	North West	Lab
96	239.02	15,610,123	Rochdale	North West	Lab
97	239.01	15,830,378	Dewsbury and Batley	Yorkshire and The Humber	Ind
98	238.67	16,855,516	Sittingbourne and Sheppey	South East	Lab
99	238.56	15,252,769	Scunthorpe	Yorkshire and The Humber	Lab
100	238.34	14,594,534	Stalybridge and Hyde	North West	Lab
101	236.02	12,975,642	North East Derbyshire	East Midlands	Lab
102	235.08	14,086,782	Warrington North	North West	Lab
103	234.08	12,000,122	Bridlington and The Wolds	Yorkshire and The Humber	Con
104	233.80	15,468,689	Oldham East and Saddleworth	North West	Lab
105	233.71	12,918,731	Amber Valley	East Midlands	Lab
106	232.52	14,684,520	Cannock Chase	West Midlands	Lab
107	232.44	17,882,818	Coventry East	West Midlands	Lab
108	231.89	13,045,563	Scarborough and Whitby	Yorkshire and The Humber	Lab
109	231.54	18,252,072	Preston	North West	Lab
110	231.53	14,688,781	Makerfield	North West	Lab
111	231.46	20,947,256	Newcastle upon Tyne Central and West	North East	Lab
112	231.35	12,924,879	Herne Bay and Sandwich	South East	Con
113	230.77	13,994,043	Darlington	North East	Lab
114	230.54	12,636,402	Rother Valley	Yorkshire and The Humber	Lab
115	230.32	13,283,750	Southport	North West	Lab
116	228.99	12,647,228	Stoke-on-Trent South	West Midlands	Lab
117	228.85	16,483,394	Birmingham Yardley	West Midlands	Lab
118	227.45	12,894,118	Doncaster East and the Isle of Axholme	Yorkshire and The Humber	Lab
119	226.42	15,472,959	Stockport	North West	Lab
120	225.18	13,368,131	Camborne and Redruth	South West	Lab
121	225.00	13,347,901	Weston-super-Mare	South West	Lab
122	224.28	12,645,575	South Dorset	South West	Lab
123	223.59	13,139,919	Barrow and Furness	North West	Lab
124	223.05	15,890,117	Leeds East	Yorkshire and The Humber	Lab
125	222.88	18,836,768	Leeds South	Yorkshire and The Humber	Lab
126	222.35	15,520,102	Bristol South	South West	Lab
127	221.79	14,132,730	Sherwood Forest	East Midlands	Lab
128	221.11	13,961,972	Rossendale and Darwen	North West	Lab
129	220.96	13,246,998	Cramlington and Killingworth	North East	Lab
130	220.76	13,594,120	Southend East and Rochford	East of England	Lab
131	220.65	12,352,842	Gainsborough	East Midlands	Con

132	219.30	15,000,837	Worsley and Eccles	North West	Lab
133	218.58	13,875,612	Carlisle	North West	Lab
134	218.16	16,802,160	Plymouth Sutton and Devonport	South West	Lab
135	217.52	12,997,471	Eastbourne	South East	LD
136	217.13	12,183,798	Morecambe and Lunesdale	North West	Lab
137	216.97	16,003,244	Liverpool Wavertree	North West	Lab
138	216.71	8,773,935	Isle of Wight West	South East	Lab
139	215.97	14,045,054	Leeds West and Pudsey	Yorkshire and The Humber	Lab
140	215.72	15,872,907	Smethwick	West Midlands	Lab
141	214.81	11,144,637	South East Cornwall	South West	Lab
142	214.53	13,573,290	West Lancashire	North West	Lab
143	214.28	12,838,100	Mid Cheshire	North West	Lab
144	212.71	13,002,630	North East Cambridgeshire	East of England	Con
145	211.45	12,530,457	Wyre Forest	West Midlands	Con
146	211.17	12,586,822	St Austell and Newquay	South West	Lab
147	211.04	12,052,425	North Warwickshire and Bedworth	West Midlands	Lab
148	210.73	14,334,454	Wakefield and Rothwell	Yorkshire and The Humber	Lab
149	210.45	12,584,457	Erewash	East Midlands	Lab
150	210.27	12,089,935	Halesowen	West Midlands	Lab
151	209.30	14,805,164	West Bromwich	West Midlands	Lab
152	208.80	11,600,154	Havant	South East	Con
153	208.71	13,167,346	Nuneaton	West Midlands	Lab
154	208.42	16,732,040	Birmingham Perry Barr	West Midlands	Ind
155	207.79	10,737,574	Sefton Central	North West	Lab
156	207.31	9,433,602	North Norfolk	East of England	LD
157	206.89	13,071,058	Bury North	North West	Lab
158	206.49	11,923,878	Spen Valley	Yorkshire and The Humber	Lab
159	206.37	16,813,170	Peterborough	East of England	Lab
160	205.96	13,461,889	Stretford and Urmston	North West	Lab
161	205.50	13,607,488	Pendle and Clitheroe	North West	Lab
162	205.08	13,164,684	Brighton Kemptown and Peacehaven	South East	Lab
163	204.59	13,528,128	Bury South	North West	Lab
164	204.35	10,296,554	St Ives	South West	LD
165	204.04	13,457,224	Kingston upon Hull West and Haltemprice	Yorkshire and The Humber	Lab
166	202.62	11,306,812	Fylde	North West	Con
167	201.98	11,454,156	Stourbridge	West Midlands	Lab
168	200.85	11,819,623	North West Norfolk	East of England	Con
169	200.81	11,928,750	Bridgwater	South West	Con
170	199.96	10,410,350	North Northumberland	North East	Lab
171	199.90	13,637,483	City of Durham	North East	Lab
172	199.69	10,552,108	Penistone and Stocksbridge	Yorkshire and The Humber	Lab
173	199.60	11,935,976	Newcastle-under-Lyme	West Midlands	Lab
174	198.06	11,179,002	North Cornwall	South West	LD
175	197.87	16,073,033	Enfield North	London	Lab
176	197.60	18,352,394	Salford	North West	Lab
177	197.52	13,165,642	Chatham and Aylesford	South East	Lab
178	197.42	11,302,657	Tynemouth	North East	Lab
179	195.21	13,112,004	Derby North	East Midlands	Lab
180	194.04	9,285,752	Bexhill and Battle	South East	Con
181	194.03	14,933,134	Kingston upon Hull North and Cottingham	Yorkshire and The Humber	Lab
182	193.98	14,143,274	Ipswich	East of England	Lab
183	192.99	12,026,970	Chorley	North West	Spk
184	192.33	9,579,367	South Devon	South West	LD
185	191.63	10,280,252	Brigg and Immingham	Yorkshire and The Humber	Con
186	191.48	16,326,896	Leicester West	East Midlands	Lab
187	191.48	11,840,475	South West Norfolk	East of England	Lab
188	191.07	10,587,174	Aldridge-Brownhills	West Midlands	Con
189	190.57	9,299,634	Wirral West	North West	Lab
190	190.25	15,208,102	Edmonton and Winchmore Hill	London	Lab
191	189.55	11,357,097	Keighley and Ilkley	Yorkshire and The Humber	Con
192	189.53	11,384,997	Bolton West	North West	Lab
193	188.66	13,378,847	Wolverhampton West	West Midlands	Lab
194	188.39	10,089,813	Newton Abbot	South West	LD
195	187.67	11,572,758	Leeds South West and Morley	Yorkshire and The Humber	Lab
196	186.60	13,195,041	Birmingham Edgbaston	West Midlands	Lab
197	186.28	11,571,124	Gedling	East Midlands	Lab
198	186.22	12,196,476	South Holland and The Deepings	East Midlands	Con
199	185.95	11,555,180	Norwich North	East of England	Lab
200	184.40	10,824,035	Meriden and Solihull East	West Midlands	Con
201	184.28	11,471,800	Tamworth	West Midlands	Lab

202	184.26	14,031,586	Birmingham Hall Green and Moseley	West Midlands	Lab
203	183.76	10,564,245	Gosport	South East	Con
204	183.65	13,898,184	Gloucester	South West	Lab
205	183.55	12,948,664	Crewe and Nantwich	North West	Lab
206	183.02	11,947,912	Bristol North East	South West	Lab
207	182.64	9,819,818	Torridge and Tavistock	South West	Con
208	181.95	14,361,713	Lewisham East	London	Lab
209	181.73	10,140,320	Hazel Grove	North West	LD
210	181.61	9,580,028	Castle Point	East of England	Con
211	181.40	10,082,371	High Peak	East Midlands	Lab
212	180.92	14,276,257	Lincoln	East Midlands	Lab
213	180.55	11,544,096	Gillingham and Rainham	South East	Lab
214	180.33	11,405,198	South Basildon and East Thurrock	East of England	RUK
215	179.53	10,942,646	Bognor Regis and Littlehampton	South East	Con
216	179.32	17,433,144	Tottenham	London	Lab
217	179.09	9,127,874	Tiverton and Minehead	South West	LD
218	178.95	12,223,358	The Wrekin	West Midlands	Con
219	178.91	11,892,993	Rochester and Strood	South East	Lab
220	178.67	10,215,328	Penrith and Solway	North West	Lab
221	178.63	13,194,067	Corby and East Northamptonshire	East Midlands	Lab
222	178.28	8,781,297	Staffordshire Moorlands	West Midlands	Con
223	178.11	11,720,960	Gravesham	South East	Lab
224	177.64	14,226,764	Nottingham South	East Midlands	Lab
225	177.63	17,118,276	Manchester Central	North West	Lab
226	177.08	16,312,809	Nottingham East	East Midlands	Lab
227	177.02	11,854,124	Basildon and Billericay	East of England	Con
228	176.25	15,767,850	Queen's Park and Maida Vale	London	Lab
229	176.05	12,926,638	Norwich South	East of England	Lab
230	175.82	13,174,743	Birmingham Selly Oak	West Midlands	Lab
231	175.48	10,125,066	North Devon	South West	LD
232	175.40	15,985,170	Brent East	London	Lab
233	175.33	15,734,604	Erith and Thamesmead	London	Lab
234	175.22	12,430,397	Wellingborough and Rushden	East Midlands	Lab
235	175.08	10,605,902	Redditch	West Midlands	Lab
236	174.99	12,086,462	Kettering	East Midlands	Lab
237	174.83	10,555,088	Calder Valley	Yorkshire and The Humber	Lab
238	174.55	10,731,060	Yeovil	South West	LD
239	173.42	12,227,870	Harlow	East of England	Lab
240	172.86	9,935,808	South Ribble	North West	Lab
241	172.62	10,272,950	North Shropshire	West Midlands	LD
242	172.24	19,406,224	Birmingham Ladywood	West Midlands	Lab
243	171.96	15,273,418	Barking	London	Lab
244	171.80	12,931,741	Southampton Itchen	South East	Lab
245	171.73	10,370,110	Chester North and Neston	North West	Lab
246	171.71	10,078,457	Grantham and Bourne	East Midlands	Con
247	171.08	13,007,335	Bristol East	South West	Lab
248	170.71	9,247,182	Forest of Dean	South West	Lab
249	170.23	10,331,813	South Derbyshire	East Midlands	Lab
250	170.07	8,774,802	Suffolk Coastal	East of England	Lab
251	169.59	8,517,135	West Dorset	South West	LD
252	169.52	12,056,610	Bedford	East of England	Lab
253	169.49	13,648,797	Hackney North and Stoke Newington	London	Lab
254	169.38	11,853,625	Croydon East	London	Lab
255	169.12	10,262,401	Faversham and Mid Kent	South East	Con
256	169.09	13,940,709	Islington North	London	Ind
257	169.00	11,739,164	Coventry North West	West Midlands	Lab
258	168.96	9,861,394	Harwich and North Essex	East of England	Con
259	168.67	9,772,765	Sleaford and North Hykeham	East Midlands	Con
260	168.61	14,813,000	Hackney South and Shoreditch	London	Lab
261	168.43	12,929,577	Dagenham and Rainham	London	Lab
262	168.11	9,431,503	Stone, Great Wyrley and Penkridge	West Midlands	Con
263	168.03	7,519,459	Christchurch	South West	Con
264	167.88	9,404,253	Mid Norfolk	East of England	Con
265	167.35	10,665,032	Portsmouth North	South East	Lab
266	167.11	12,867,180	Southampton Test	South East	Lab
267	166.63	8,850,234	Lewes	South East	LD
268	166.53	11,890,759	Burton and Uttoxeter	West Midlands	Lab
269	166.50	11,386,092	Bournemouth East	South West	Lab
270	166.43	12,254,945	Bournemouth West	South West	Lab
271	166.39	9,361,981	Ossett and Denby Dale	Yorkshire and The Humber	Lab

272	165.92	9,736,318	Shipley	Yorkshire and The Humber	Lab
273	165.54	9,495,150	Colne Valley	Yorkshire and The Humber	Lab
274	165.46	9,698,584	South West Wiltshire	South West	Con
275	165.40	9,786,441	Broxtowe	East Midlands	Lab
276	165.23	11,881,042	Luton North	East of England	Lab
277	165.16	15,115,218	Islington South and Finsbury	London	Lab
278	165.10	11,193,742	Ashford	South East	Lab
279	164.98	9,550,746	Hereford and South Herefordshire	West Midlands	Con
280	162.58	10,336,552	Stevenage	East of England	Lab
281	162.32	11,479,123	Eltham and Chislehurst	London	Lab
282	161.91	9,458,859	Stafford	West Midlands	Lab
283	161.78	13,856,684	Northampton North	East Midlands	Lab
284	161.69	9,401,102	Poole	South West	Lab
285	161.55	8,062,885	Waveney Valley	East of England	Green
286	161.51	13,848,722	Holborn and St Pancras	London	Lab
287	161.46	8,407,419	Beverley and Holderness	Yorkshire and The Humber	Con
288	161.16	13,059,546	Leicester East	East Midlands	Con
289	160.12	10,327,898	Warrington South	North West	Lab
290	159.94	9,005,606	South West Devon	South West	Con
291	159.65	10,094,513	Selby	Yorkshire and The Humber	Lab
292	159.46	8,108,232	North Herefordshire	West Midlands	Green
293	158.85	8,126,103	Kingswinford and South Staffordshire	West Midlands	Con
294	158.82	10,270,495	Lancaster and Wyre	North West	Lab
295	158.49	8,465,968	Hexham	North East	Lab
296	158.33	11,990,754	Portsmouth South	South East	Lab
297	158.04	9,123,698	Worthing West	South East	Lab
298	157.93	8,329,844	South Shropshire	West Midlands	Con
299	156.91	10,616,638	Broxbourne	East of England	Con
300	156.89	9,026,880	Lichfield	West Midlands	Lab
301	156.74	11,091,262	Bristol North West	South West	Lab
302	156.65	13,387,350	Croydon West	London	Lab
303	156.61	9,897,786	Newark	East Midlands	Con
304	155.47	9,654,346	Bexleyheath and Crayford	London	Lab
305	155.32	9,077,932	Truro and Falmouth	South West	Lab
306	154.97	9,718,966	Southend West and Leigh	East of England	Lab
307	154.82	8,376,317	Congleton	North West	Lab
308	154.77	8,640,351	West Worcestershire	West Midlands	Con
309	154.36	10,000,035	Taunton and Wellington	South West	LD
310	154.26	11,645,927	Colchester	East of England	Lab
311	153.76	8,319,960	Broadland and Fakenham	East of England	Con
312	153.57	13,756,522	Manchester Rusholme	North West	Lab
313	153.08	12,799,434	Luton South and South Bedfordshire	East of England	Lab
314	152.94	10,523,578	Canterbury	South East	Lab
315	152.51	9,206,200	Hinckley and Bosworth	East Midlands	Con
316	152.36	8,127,545	Glastonbury and Somerton	South West	LD
317	152.32	9,105,540	East Worthing and Shoreham	South East	Lab
318	152.31	10,222,620	Worcester	West Midlands	Lab
319	152.05	10,036,160	Hemel Hempstead	East of England	Lab
320	151.91	8,416,223	Thirsk and Malton	Yorkshire and The Humber	Con
321	151.65	9,240,808	Shrewsbury	West Midlands	Lab
322	150.94	8,124,681	Central Devon	South West	Con
323	150.82	8,366,347	Stockton West	North East	Con
324	150.55	11,904,505	Thurrock	East of England	Lab
325	149.91	9,171,372	Leeds North East	Yorkshire and The Humber	Lab
326	149.29	10,926,288	North West Cambridgeshire	East of England	Lab
327	148.21	12,783,095	Southgate and Wood Green	London	Lab
328	148.17	9,381,188	North West Leicestershire	East Midlands	Lab
329	147.91	9,090,347	Droitwich and Evesham	West Midlands	Con
330	147.79	8,052,496	Weald of Kent	South East	Con
331	147.57	10,034,496	Swindon North	South West	Lab
332	146.72	12,106,612	Peckham	London	Lab
333	146.42	9,634,961	Hornchurch and Upminster	London	Con
334	146.39	9,070,439	Witham	East of England	Con
335	146.26	6,481,075	New Forest West	South East	Con
336	145.67	8,017,814	Frome and East Somerset	South West	LD
337	145.57	12,319,404	Leicester South	East Midlands	Ind
338	145.36	10,037,799	Rugby	West Midlands	Lab
339	145.15	9,007,669	Bury St Edmunds and Stowmarket	East of England	Lab
340	145.06	10,031,950	Hove and Portslade	South East	Lab
341	144.68	14,808,154	West Ham and Beckton	London	Lab

342	144.36	8,776,390	Exmouth and Exeter East	South West	Con
343	144.09	7,525,727	New Forest East	South East	Con
344	143.80	7,657,667	North Dorset	South West	Con
345	143.50	7,333,282	Wells and Mendip Hills	South West	LD
346	143.47	8,358,314	Fareham and Waterlooville	South East	Con
347	143.14	10,682,544	Swindon South	South West	Lab
348	142.97	7,437,583	Mid Derbyshire	East Midlands	Lab
349	142.12	8,693,006	Ribble Valley	North West	Lab
350	142.11	7,757,132	Richmond and Northallerton	Yorkshire and The Humber	Con
351	141.83	7,695,844	Mid Dorset and North Poole	South West	LD
352	141.81	6,978,621	Honiton and Sidmouth	South West	LD
353	141.76	14,359,328	Bethnal Green and Stepney	London	Lab
354	141.06	8,007,158	Melton and Syston	East Midlands	Con
355	140.90	8,319,018	Thornbury and Yate	South West	LD
356	140.61	10,967,567	Crawley	South East	Lab
357	139.98	8,222,210	Bromsgrove	West Midlands	Con
358	139.92	12,115,446	Milton Keynes Central	South East	Lab
359	139.56	9,414,510	Carshalton and Wallington	London	LD
360	138.91	7,510,862	Salisbury	South West	Con
361	138.53	7,431,184	South Suffolk	East of England	Con
362	138.48	11,259,951	Vauxhall and Camberwell Green	London	Lab
363	138.21	7,272,236	Derbyshire Dales	East Midlands	Lab
364	137.82	9,975,882	Newcastle upon Tyne North	North East	Lab
365	137.28	9,560,366	Dunstable and Leighton Buzzard	East of England	Lab
366	136.65	8,098,550	Maldon	East of England	Con
367	136.40	11,769,202	Walthamstow	London	Lab
368	136.23	8,429,838	Milton Keynes North	South East	Lab
369	135.85	11,611,919	Ealing North	London	Lab
370	135.76	10,118,814	West Suffolk	East of England	Con
371	135.41	10,129,957	Welwyn Hatfield	East of England	Lab
372	135.12	8,299,609	Chichester	South East	LD
373	135.10	9,570,563	Northampton South	East Midlands	Lab
374	135.01	11,764,306	Hayes and Harlington	London	Lab
375	134.84	7,552,897	Central Suffolk and North Ipswich	East of England	Con
376	134.60	7,739,069	North East Somerset and Hanham	South West	Lab
377	134.22	9,398,313	Chingford and Woodford Green	London	Con
378	134.10	8,825,802	Buckingham and Bletchley	South East	Lab
379	134.09	10,085,876	Dulwich and West Norwood	London	Lab
380	133.82	7,896,539	Orpington	London	Con
381	133.75	7,450,291	Chester South and Eddisbury	North West	Con
382	133.56	7,593,581	Macclesfield	North West	Lab
383	133.41	7,272,292	Melksham and Devizes	South West	LD
384	132.90	7,720,139	Stroud	South West	Lab
385	132.89	7,385,458	South Norfolk	East of England	Lab
386	132.80	12,049,318	East Ham	London	Lab
387	132.63	9,311,954	Maidstone and Malling	South East	Con
388	132.61	8,509,662	Braintree	East of England	Con
389	132.37	8,627,906	Hertsmere	East of England	Con
390	132.37	9,399,059	Dartford	South East	Lab
391	132.28	8,217,732	Harborough, Oadby and Wigston	East Midlands	Con
392	131.85	11,380,460	Ilford South	London	Lab
393	131.29	9,044,433	Romford	London	Con
394	130.84	11,851,810	Feltham and Heston	London	Lab
395	130.62	8,329,924	Epping Forest	East of England	Con
396	130.01	9,713,476	Exeter	South West	Lab
397	129.00	7,307,585	Sutton Coldfield	West Midlands	Con
398	127.64	11,269,622	Lewisham North	London	Lab
399	127.61	8,210,969	Daventry	East Midlands	Con
400	126.76	7,885,839	Chippenham	South West	LD
401	126.49	11,101,523	Coventry South	West Midlands	Lab
402	126.37	8,576,452	Loughborough	East Midlands	Lab
403	126.28	7,877,241	North East Hertfordshire	East of England	Lab
404	126.00	11,162,684	Hendon	London	Lab
405	125.19	7,858,891	South Leicestershire	East Midlands	Con
406	125.14	9,862,685	Ilford North	London	Lab
407	124.93	7,227,186	Tewkesbury	South West	LD
408	124.90	10,392,354	Streatham and Croydon North	London	Lab
409	124.88	6,963,907	Leeds North West	Yorkshire and The Humber	Lab
410	124.76	9,093,660	Basingstoke	South East	Lab
411	124.28	10,891,207	Greenwich and Woolwich	London	Lab

412	124.17	7,472,770	Altrincham and Sale West	North West	Lab
413	124.08	8,547,244	North West Hampshire	South East	Con
414	124.02	8,427,433	Manchester Withington	North West	Lab
415	123.76	7,265,484	Sevenoaks	South East	Con
416	123.72	8,497,042	Lewisham West and East Dulwich	London	Lab
417	123.55	8,547,336	Chelmsford	East of England	LD
418	123.43	10,692,258	Bermondsey and Old Southwark	London	Lab
419	123.10	8,067,397	Ely and East Cambridgeshire	East of England	LD
420	122.86	7,548,953	Mid Leicestershire	East Midlands	Con
421	122.40	7,675,512	Goole and Pocklington	Yorkshire and The Humber	Con
422	122.31	8,655,222	Aylesbury	South East	Lab
423	122.10	10,261,484	Mitcham and Morden	London	Lab
424	122.05	6,822,457	Solihull West and Shirley	West Midlands	Con
425	121.28	10,154,565	Hampstead and Highgate	London	Lab
426	120.84	10,286,459	Ealing Southall	London	Lab
427	120.59	7,698,436	Banbury	South East	Lab
428	120.45	6,968,022	Eastleigh	South East	LD
429	120.32	8,813,182	Watford	East of England	Lab
430	120.20	6,922,478	Tatton	North West	Con
431	120.14	7,814,743	Spelthorne	South East	Con
432	119.37	6,681,971	Stratford-on-Avon	West Midlands	LD
433	119.33	7,676,077	North Bedfordshire	East of England	Con
434	119.25	11,857,830	Stratford and Bow	London	Lab
435	119.08	6,284,025	Sussex Weald	South East	Con
436	118.42	8,250,635	Chipping Barnet	London	Lab
437	118.40	6,727,642	Skipton and Ripon	Yorkshire and The Humber	Con
438	118.24	6,861,210	Rayleigh and Wickford	East of England	Con
439	117.87	6,615,640	Cheadle	North West	LD
440	117.44	6,395,396	North Cotswolds	South West	Con
441	117.42	9,603,687	Clapham and Brixton Hill	London	Lab
442	116.88	13,238,789	Poplar and Limehouse	London	Lab
443	116.78	6,471,276	Rutland and Stamford	East Midlands	Con
444	116.76	9,020,215	Brighton Pavilion	South East	Green
445	116.43	9,345,774	Leyton and Wanstead	London	Lab
446	115.98	9,278,062	Finchley and Golders Green	London	Lab
447	115.84	7,879,636	Huntingdon	East of England	Con
448	115.75	6,676,056	Tonbridge	South East	Con
449	115.68	7,296,884	East Wiltshire	South West	Con
450	115.10	10,333,718	Slough	South East	Lab
451	114.97	6,164,299	North Somerset	South West	Lab
452	114.70	6,079,523	Westmorland and Lonsdale	North West	LD
453	112.92	7,882,203	Hornsey and Friern Barnet	London	Lab
454	112.90	9,839,005	Brentford and Isleworth	London	Lab
455	112.53	6,686,020	Brentwood and Ongar	East of England	Con
456	112.49	7,245,607	Tunbridge Wells	South East	LD
457	112.24	9,156,646	Harrow West	London	Lab
458	112.18	8,963,753	Uxbridge and South Ruislip	London	Lab
459	111.76	7,013,904	Old Bexley and Sidcup	London	Con
460	111.32	7,871,826	Warwick and Leamington	West Midlands	Lab
461	110.95	6,831,076	Rushcliffe	East Midlands	Lab
462	110.64	10,597,718	Ealing Central and Acton	London	Lab
463	109.60	7,316,979	St Neots and Mid Cambridgeshire	East of England	LD
464	109.12	6,858,694	Harrogate and Knaresborough	Yorkshire and The Humber	LD
465	108.77	9,126,230	Hammersmith and Chiswick	London	Lab
466	108.73	8,710,474	York Central	Yorkshire and The Humber	Lab
467	107.27	8,332,436	Aldershot	South East	Lab
468	107.14	6,705,157	Hitchin	East of England	Lab
469	107.11	6,227,426	Reading West and Mid Berkshire	South East	Lab
470	106.95	6,554,056	South West Hertfordshire	East of England	Con
471	106.54	6,402,486	East Surrey	South East	Con
472	106.48	7,542,480	Bath	South West	LD
473	106.25	6,700,094	Croydon South	London	Con
474	105.81	8,959,845	Oxford East	South East	Lab
475	105.64	6,504,144	Romsey and Southampton North	South East	Con
476	105.41	7,942,497	Harrow East	London	Con
477	105.00	6,718,479	Cheltenham	South West	LD
478	104.65	7,740,925	Filton and Bradley Stoke	South West	Lab
479	104.53	10,418,868	Kensington and Bayswater	London	Lab
480	104.50	6,657,605	Hamble Valley	South East	Con
481	104.27	6,318,864	Newbury	South East	LD

482	103.68	5,569,672	Arundel and South Downs	South East	Con
483	103.46	6,610,649	Mid Bedfordshire	East of England	Con
484	103.34	6,292,446	Bromley and Biggin Hill	London	Con
485	103.11	9,079,369	Chelsea and Fulham	London	Lab
486	102.94	5,396,509	Wetherby and Easingwold	Yorkshire and The Humber	Con
487	102.22	6,898,262	Bracknell	South East	Lab
488	102.11	7,126,148	Beckenham and Penge	London	Lab
489	102.02	6,526,679	North West Essex	East of England	Con
490	100.52	6,477,701	Bicester and Woodstock	South East	LD
491	99.86	6,475,013	Winchester	South East	LD
492	99.25	6,157,189	South Northamptonshire	East Midlands	Con
493	99.14	6,921,489	Wycombe	South East	Lab
494	98.23	6,128,214	St Albans	East of England	LD
495	98.18	5,497,815	South Cotswolds	South West	LD
496	97.98	5,542,482	Dorking and Horley	South East	LD
497	97.58	9,290,921	Brent West	London	Lab
498	97.55	5,569,016	Kenilworth and Southam	West Midlands	Con
499	97.18	5,174,711	East Hampshire	South East	Con
500	96.23	5,947,997	Witney	South East	LD
501	95.86	7,585,170	Tooting	London	Lab
502	95.86	5,521,016	East Grinstead and Uckfield	South East	Con
503	95.26	5,184,363	York Outer	Yorkshire and The Humber	Lab
504	94.89	6,402,500	Hertford and Stortford	East of England	Lab
505	94.87	5,624,535	Ruislip, Northwood and Pinner	London	Con
506	94.80	6,120,030	South Cambridgeshire	East of England	LD
507	94.33	7,049,081	Sheffield Central	Yorkshire and The Humber	Lab
508	93.53	9,128,938	Cities of London and Westminster	London	Lab
509	92.99	8,455,127	Leeds Central and Headingley	Yorkshire and The Humber	Lab
510	92.76	7,471,701	Putney	London	Lab
511	91.90	5,480,095	Mid Sussex	South East	LD
512	91.28	6,361,313	Earley and Woodley	South East	Lab
513	90.91	6,199,223	Didcot and Wantage	South East	LD
514	90.60	5,845,047	Horsham	South East	LD
515	90.10	6,978,541	Kingston and Surbiton	London	LD
516	89.99	5,207,316	Godalming and Ash	South East	Con
517	89.81	5,962,631	Runnymede and Weybridge	South East	Con
518	89.22	5,897,526	Sutton and Cheam	London	LD
519	89.07	6,016,456	Reigate	South East	Con
520	88.99	7,458,530	Battersea	London	Lab
521	87.64	5,042,237	Beaconsfield	South East	Con
522	87.33	5,038,722	Sheffield Hallam	Yorkshire and The Humber	Lab
523	87.28	5,750,902	Epsom and Ewell	South East	LD
524	86.60	7,115,906	Reading Central	South East	Lab
525	84.45	5,555,053	Woking	South East	LD
526	84.22	6,035,965	Windsor	South East	Con
527	82.52	5,012,869	Farnham and Bordon	South East	Con
528	81.42	4,981,166	Surrey Heath	South East	LD
529	80.50	5,093,404	Esher and Walton	South East	LD
530	80.49	7,549,317	Cambridge	East of England	Lab
531	79.62	5,415,232	Twickenham	London	LD
532	76.88	4,366,893	Henley and Thame	South East	LD
533	76.36	4,456,510	Chesham and Amersham	South East	LD
534	75.72	5,347,854	Richmond Park	London	LD
535	75.10	4,936,479	Maidenhead	South East	LD
536	74.43	4,150,420	Harpenden and Berkhamsted	East of England	LD
537	73.99	4,586,866	North East Hampshire	South East	LD
538	71.73	4,244,443	Mid Buckinghamshire	South East	Con
539	70.92	4,887,349	Guildford	South East	LD
540	69.37	4,207,824	Wokingham	South East	LD
541	67.41	4,857,497	Wimbledon	London	LD
542	65.70	4,731,523	Oxford West and Abingdon	South East	LD
543	62.30	5,030,599	Bristol Central	South West	Green

Party abbreviations**Appendix Table B: Regional Averages**

Abbreviation	Full name	Region	Average financial loss per working age person, £
Lab	Labour		
Con	Conservative	North East	268.83
LD	Liberal Democrat	North West	230.90
Ind	Independent	Yorkshire and The Humber	205.96
RUK	Reform UK	West Midlands	191.07
Green	Green	East Midlands	184.99
Spk	Speaker	South West	163.05
		East of England	154.00
		South East	133.80
		London	130.03

References

- 1 HM Government. Personal Independence Payment (PIP) 2025 [Available from: <https://www.gov.uk/pip>]
- 2 Department for Work and Pensions. Stat-Xplore 2025 [Available from: <https://stat-xplore.dwp.gov.uk/webapi/jsf/login.xhtml>]
- 3 Department for Work and Pensions. Stat-Xplore 2025 [Available from: <https://stat-xplore.dwp.gov.uk/webapi/jsf/login.xhtml>]
- 4 HM Government. Personal Independence Payment (PIP) 2025 [Available from: <https://www.gov.uk/pip>]
- 5 Department for Work and Pensions. Pathways to Work: Reforming Benefits and Support to Get Britain Working Green Paper 2025 [Available from: <https://www.gov.uk/government/consultations/pathways-to-work-reforming-benefits-and-support-to-get-britain-working-green-paper>]
- 6 HM Government. Carer's Allowance: Eligibility 2025 [Available from: <https://www.gov.uk/carers-allowance/eligibility>]
- 7 Department for Work and Pensions. Spring Statement 2025 health and disability benefit reforms - Impacts 2025 [Available from: <https://assets.publishing.service.gov.uk/mediaw/67e667fe4a226ab6c41b1fe2/spring-statement-2025-health-and-disability-benefit-reforms-impacts.pdf>]
- 8 UK Parliament House of Commons Library. Constituency data: Personal Independence Payment (PIP) 2025 [Available from: <https://commonslibrary.parliament.uk/constituency-data-personal-independence-payment-2/#:~:text=Find%20data%20for%20your%20constituency%20on%20people%20claiming,Payment%20is%20being%20replaced%20by%20Adult%20Disability%20Payment>]
- 9 UK Parliament House of Commons Library. Constituency data: Population, by age 2025 [Available from: <https://commonslibrary.parliament.uk/constituency-statistics-population-by-age/>]
- 10 UK Parliament House of Commons Library. Deprivation in English constituencies, 2019 2024 [Available from Office for National Statistics: <https://commonslibrary.parliament.uk/research-briefings/cbp-7327/>]
- 11 Life expectancy at birth for Parliamentary Constituencies in the UK: 2022 2025 [Available from: <https://www.ons.gov.uk/peoplepopulationandcommunity/healthandsocialcare/healthandlifeexpectancies/adhocs/2557life-expectancyatbirthforparliamentaryconstituenciesintheuk2022>]
- 12 Department for Work and Pensions. Stat-Xplore 2025 [Available from: <https://stat-xplore.dwp.gov.uk/webapi/jsf/login.xhtml>]
- 13 Department for Work and Pensions. Freedom of Information Request FOI2025/24990 - 15th April 2025 2025 [Available from: https://www.whatdotheyknow.com/request/personal_independence_payment_pi_7/response/2989270/attach/3/Response%20FOI2025%2024990.pdf]
- 14 It should be noted that these statistics given in the FOI are for all working age claimants living in regions under DWP policy ownership. However, for our analysis we assume that the percentage decrease in those eligible is uniform across all constituencies in England. However, it is likely that there will be geographical variation in PIP financial losses due to differing severity of conditions of those claiming PIP across constituencies (and therefore varying probability of complete exclusion from the Daily Living element), as well as due to potential changes to age-based eligibility (currently under consultation) due to differing rates of claimants across age groups in constituencies.
- 15 Beatty C, Fothergill S. The uneven impact of welfare reform: The financial losses to places and people: Sheffield Hallam University Centre for Regional Economic and Social Research; 2016 [Available from: <https://www.shu.ac.uk/centre-regional-economic-social-research/projects/all-projects/the-uneven-impact-of-welfare-reform>]

